

| | | | | | |
|--------------------------------------|--|--------------------------|---------------------|---|---------------------------------|
| Address | 1 Ang Mo Kio Street 63, Singapore 569110 | | |  | |
| Lot area | 8126m ² | Total floor area | 10606m ² | | |
| Establishment day | July 1979 | Employees | 226persons | | |
| ISO14001 certification date | Sept 1999 | ISO14001 renewed | Feb 2009 | | |
| Major Products | Wireless Communication Products | | | | |
| Environmental Information disclosure | 12items | visitors on factory tour | 151persons | | collaboration with municipality |
| Contact | HR & Admin Dept, General Admin Division | | TEL: | 65-6482-3222 | |

Message from Compliance Administrator

Kenwood Electronics Technologies (S) Pte. Ltd ("KETS") was established in 1979 in Singapore and has been continuously growing for the last 30 years. Now, KETS is the manufacturing hub for Kenwood's Wireless Communication Products, featuring R&D function. After obtaining ISO14001 in Sept/1999, KETS has been constantly striving to reduce environmental impact, employing environmentally friendly parts for products developed by KETS and reducing consumption of resources substantially. Considering the importance of global warming prevention, we will continue and improve environmental preservation activities.



Compliance Administrators
Ryo Mizuhara, MD

Main activities in FY2008

| Target | Result |
|--|---|
| To reduce consumption of A4-sized paper from 90 reams to 72 reams per month. (1 Ream is 500 papers.) | We hit the target. The average monthly consumption was 72 reams. |
| To reduce consumption of electricity to less than or equal to 6,000 kWh per day. | We could not hit the target. The average daily consumption was 6,116 kWh. |
| | |

Products of Environmentally-conscious information



TK-3202



TK-3212



TK-3230



UBZ-LK20



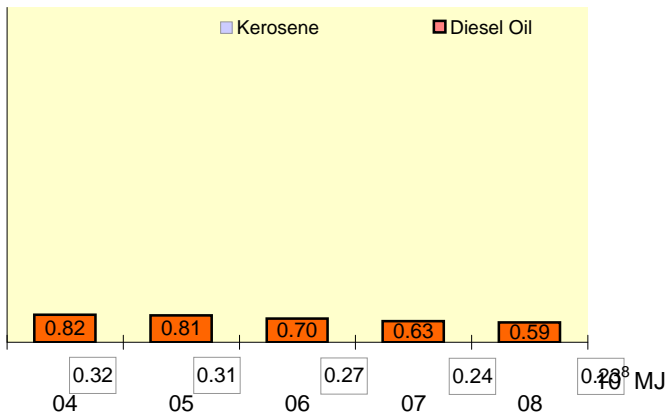
TK-8100 H

Our products are designed and manufactured with weight reduction, resource saving and energy conservation taken into consideration in order to reduce environmental impact.

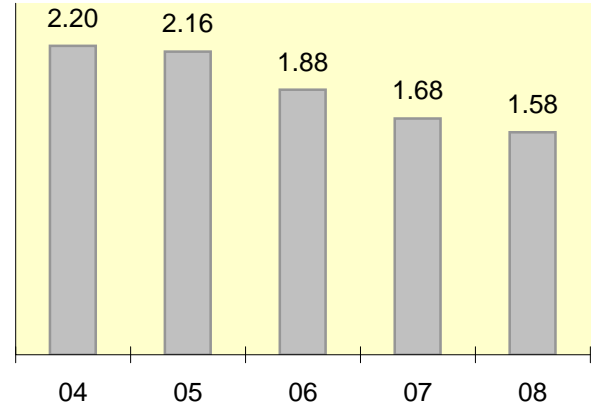
Environmental performance data

Year displayed in graph ex) 2008: April 1, 2007 - March 31, 2008

Energy (crude oil Equivalent) Unit: 1000kl



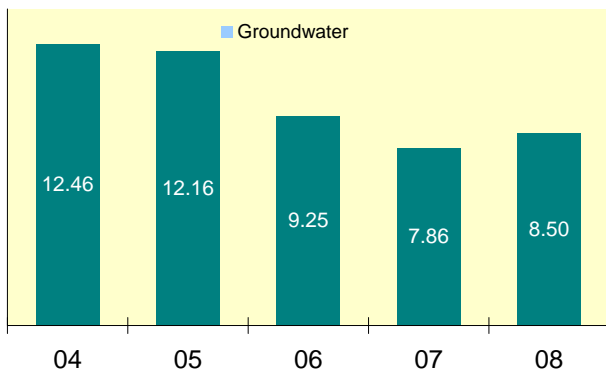
CO2 Emission Unit: 1000t-CO2



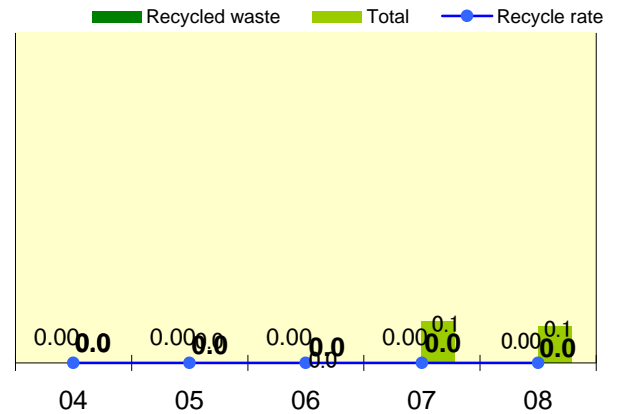
Calculation standards

Electricity CO2 Emission coefficient = 0.709kg/kwh

Water Unit: 1000m³

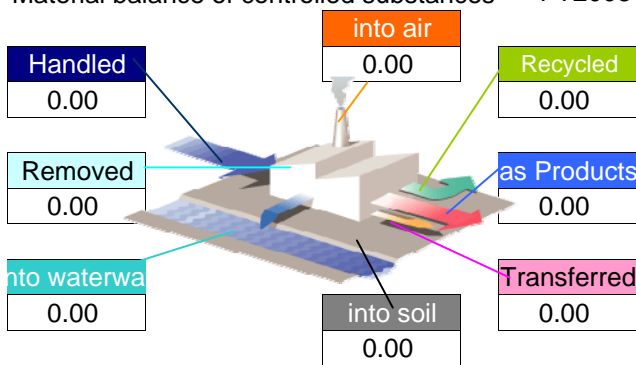


Waste Unit: 1000t, %

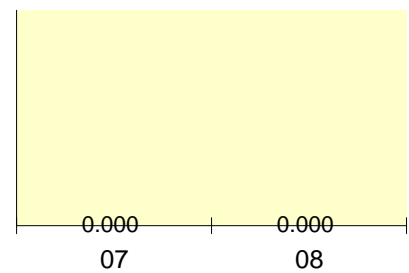


Chemical substances

Material balance of controlled substances FY2008



Key target reduction substances



About the above data

Compliance FY2008

<Air pollutant measurement results>

| | Unit | Facility name | Legal limit | Voluntary limit | Average measured | Maximum measured | Measuring frequency |
|-------------|--------------------|---------------|-------------|-----------------|------------------|------------------|---------------------|
| SOx | Nm ³ /h | N/A | | | 0.00 | | |
| | | N/A | | | 0.00 | | |
| | | N/A | | | 0.00 | | |
| NOx | ppm | N/A | | | 0.00 | | |
| | | N/A | | | 0.00 | | |
| | | N/A | | | 0.00 | | |
| Particulate | g/Nm ³ | N/A | | | 0.00 | | |
| | | N/A | | | 0.00 | | |
| | | N/A | | | 0.00 | | |

<Water pollutant measurement results>

| | Unit | Facility name | Legal limit | Voluntary limit | Average measured | Maximum measured | Measuring frequency |
|------------|------|---------------|-------------|-----------------|------------------|------------------|---------------------|
| COD | mg/l | N/A | | | 0.00 | | |
| | | N/A | | | 0.00 | | |
| | | N/A | | | 0.00 | | |
| BOD | mg/l | N/A | | | 0.00 | | |
| | | N/A | | | 0.00 | | |
| | | N/A | | | 0.00 | | |
| Nitrogen | mg/l | N/A | | | 0.00 | | |
| | | N/A | | | 0.00 | | |
| Phosphorus | mg/l | N/A | | | 0.00 | | |
| | | N/A | | | 0.00 | | |

<Noise and vibration>

| | Unit | Measurement Area | Legal limit | Voluntary limit | Average measured | Maximum measured | Measuring frequency |
|-----------|------|------------------|-------------|-----------------|------------------|------------------|---------------------|
| Noise | dB | DT Boundary area | 75 dB | N/A | 73.2 dB | N/A | 3 years |
| | | NT Boundary area | 65 dB | N/A | 58.5 dB | N/A | 3 years |
| Vibration | dB | DT N/A | | | 0.00 | | |
| | | NT N/A | | | 0.00 | | |

*Legal limit: The strictest value out of those specified by laws, ordinances or agreements.

*N/A(not applicable):The meaning when the facility is exempted from the regulation.

About excess of legal limit value

N/A

Improvement of direction by government, or point outs by neighbor

| Occurrence situation | Countermeasure |
|----------------------|----------------|
| N/A | |
| | |
| | |

Environmental Policy

ENVIRONMENTAL PHILOSOPHY AND POLICIES

Environmental Philosophy

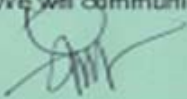
True to the Kenwood Group's corporate vision of "Reaching out to discover, inspire and enhance the enjoyment of life," we strive to expand our presence around the world while fulfilling our responsibility to the community by working toward continuous maintenance and improvement of our precious global environment and contributing to sustainable social development.

Environmental Policies

The Kenwood Group fully recognizes the environmental impact caused by the products and services of its three core business activities of car electronics, communications equipment and home electronics, and it undertakes the following measures to conserve the global environment and resources and make products environmentally-friendly.

1. In an effort to minimize greenhouse gases we will raise the efficiency of our business operations and actively pursue energy saving by creating green products that are energy efficient and conserve resources throughout their lifecycle from planning and development to production, distribution, use, and disposal.
2. We will pursue conservation and recycling of resources in our product designs and business activities to preserve limited global resources and contribute to the realization of a recycling-oriented society.
3. We realize the importance of preventing environmental pollution and will enter into partnerships with our suppliers and contractors in a continuous effort to reduce environmental pollutants.
4. We will observe environment-related laws and regulations as well as other applicable requirements that we agree to comply with.

We will communicate this environmental policy to all our employees and the general public.



Tony Liow
Management Representative
01 February 2008

Aiming to reduction of environmental impact



Reduce, Recycle & Reuse

KETS recognizes the importance of keeping the environment and has been continually striving to make improvements in resource conservation, preserving the environment to its nature state and reducing consumption in relation with environment products and promote Reduce, Recycle and Reuse program.



Practices to Reduce Consumption of Energy, Paper & Water

Apart from the Energy & Paper Management Program, KETS has been striving to reduce consumption of water as well. For this purpose the water saving devices were installed at all the water points.

KETS received an appreciation letter from Public Utilities Board on 19/Aug/2008 for its continuous efforts for water saving.

Environmental Communication



Community Service Day

05/May/2008 was KETS's first Community Service Day when it conducted the social service activity contributing to the local society.

Promotion of awareness of the need to protect the environment was kicked off few weeks before the Community Service Day.

On that day KETS's employees were assigned to clean up one of Singapore's most popular beaches. Garbage was collected and disposed.

KETS's activity was highly appreciated by National Environment Agency.



Emergency preparedness and response



Emergency preparedness and response procedures

Emergency preparedness and response are documented in our "Emergency Plan for Fire Work Instructions" and "Emergency Plan for Chemical Spill Work Instructions".

One emergency drill for Fire and Chemical Spill each is conducted once a year at least. This measure enables our employees to be familiar with the procedures which have been established for such emergencies.

Training

Briefing of new employees on the details of both "Emergency Plan for Fire Work Instructions" and "Emergency Plan for Chemical Spill Work Instructions" has been incorporated into our Orientation Programme.

Emergency Response Team ("ERT") members are fully trained for their roles to be taken up during an emergency. To equip all ERT members with the required skills, practical training sessions are conducted for them.

