

Address	189 Moo 3 Tambol Nong Buasala Amphur Muang Nakorn Ratchasima 30000				
Lot area	6500m ²	Total floor area	2400m ²		
Establishment day	2008/4	Employees	1072persons		
ISO14001 certification date	2000/1	ISO14001 renewed	2009/1		
Major Products	Optical pick up				
Environmental Information disclosure	2items	visitors on factory tour	0persons		collaboration with municipality
Contact	Personnel and General Affairs		TEL:	+66-44-212-231	

Message from Compliance Administrator

JVC OPTICAL COMPONENTS (THAILAND)CO.LTD. (JOCT) manufactures and assembles car audio "CD DVD OPTICAL PICKUP" In 2008 we have 3 months continuously realization highest productivity, and keeping to the top "CD OPTICAL PICKUP" industrial market shares. Main product is consider environment OPTICAL PICKUP, from now on we plan to reduce electricity energy in production lines, our aim is to be number 1 environment consideration factory.

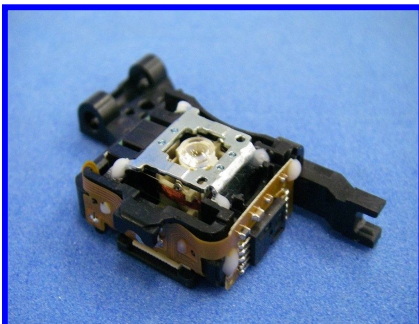


Compliance Administrators
ANUCHIT SUKPLUM

Main activities in FY2009

Target	Result
Energy conservation : Innovative reduction of energy consumption machines	we put effort to use innovative reduction of energy equipment for new model production line, and we can save energy consumption 1/5 of normal production line.
Reduction waste management	Recycling and use environmental resources effectively reclaim zero proceed
Elimination hazardous chemical	Starting control use raw materials(hazardous chemical) by RoHS regulation

Products of Environmentally-conscious information



【CD OPTICAL PICKUP】

This model for car audio CD OPTICAL PICKUP, to consist of the long life electric device, smaller, lighter than other model.



【DVD OPTICAL PICKUP】

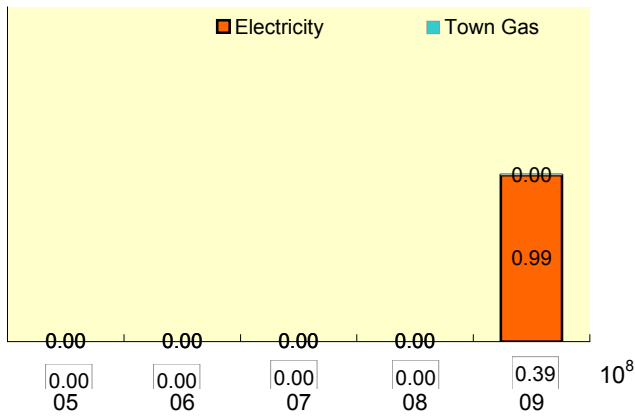
This model for car audio DVD OPTICAL PICKUP, this new model is 7.6% lighter than other model.

link to a product information web-site : http://www.jvc-victor.co.jp/products_home.html

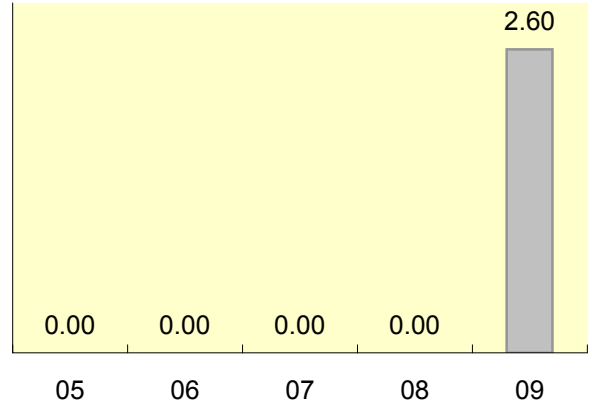
Environmental performance data

Year displayed in graph ex) 2009: April 1, 2008 - March 31,2009

Energy (crude oil Equivalent) Unit: 1000kl



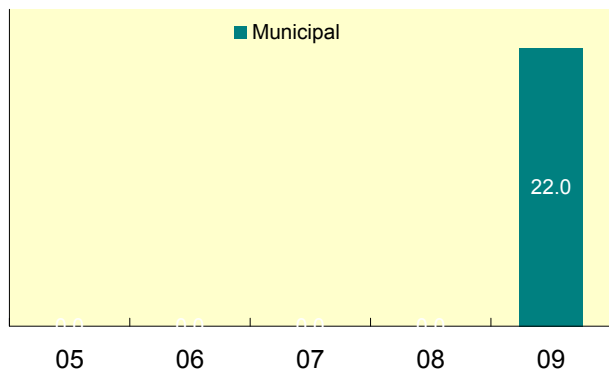
CO2 Emission Unit: 1000t-CO2



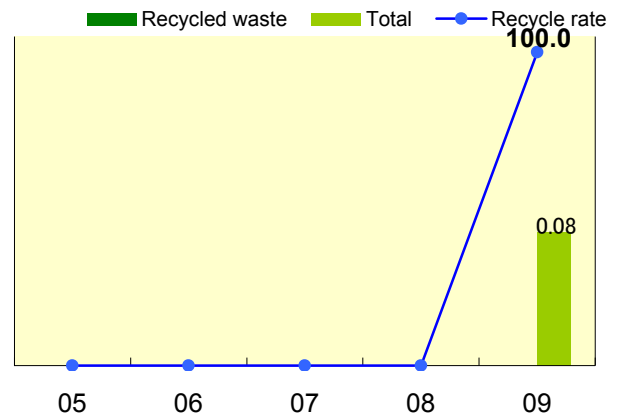
Calculation standards

Electricity CO2 Emission coefficient =0.687kg/kwh

Water Unit: 1000m³

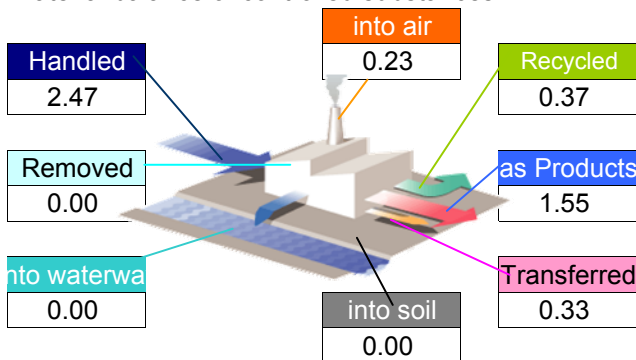


Waste Unit: 1000t, %

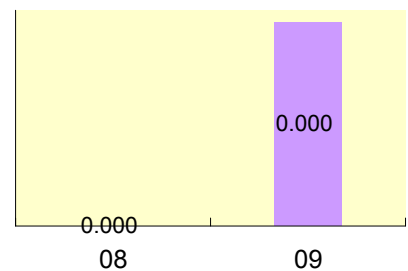


Chemical substances

Material balance of controlled substances FY2008



Key target reduction substances



About the above data

There are not the former data for the company which started on April 1, 2008. Key target reduction substances : JVC selected about 60 substances from Japanese leagal, PRTR, VOC and GHG.

Compliance FY2009

<Air pollutant measurement results>

	Unit	Facility name	Legal limit	Voluntary limit	Average measured	Maximum measured	Measuring frequency
SOx	Nm ³ /h	N/A			0.00		
					0.00		
					0.00		
NOx	ppm	N/A			0.00		
					0.00		
					0.00		
Particulate	g/Nm ³	N/A			0.00		
					0.00		
					0.00		

<Water pollutant measurement results>

	Unit	Facility name	Legal limit	Voluntary limit	Average measured	Maximum measured	Measuring frequency
COD	mg/l	Effluent Factory	120.00		106.00		6 month
					0.00		
					0.00		
BOD	mg/l	Effluent Factory	20.00		14.00		6 month
					0.00		
					0.00		
Nitrogen	mg/l	Effluent Factory	100.00		61.08		6 month
					0.00		
Phosphorus	mg/l	N/A			0.00		
					0.00		

<Noise and vibration>

	Unit	Measurement Area	Legal limit	Voluntary limit	Average measured	Maximum measured	Measuring frequency
Noise	dB	DT In factory	90.00		73.90	77.30	6 month
		NT			0.00		
Vibration	dB	DT			0.00		
		NT			0.00		

*Legal limit: The strictest value out of those specified by laws, ordinances or agreements.

*N/A(not applicable):The meaning when the facility is exempted from the regulation.

About excess of legal limit value

There is no item to report.

Improvement of direction by government, or point outs by neighbor

Occurrence situation	Countermeasure
There is no item to report.	

Environmental Policy

The company intend to comply with ISO 14001 EMS,

- 1) Prevent and reduce pollutions including continual improvement.
- 2) Comply with relevant environmental legislations and company's regulations.
- 3) Efficiently use of resources.
- 4) Inform policies to all employee.
- 5) Publicize company's implemented policies.

Aiming to reduction of environmental impact

【Reduction of electricity energy】

UV bond stiffen process : we have to changed new illumination lamps, and after changed we can reduce 1/5 energy consumption.

Environmental Communication



【Enhancement of employees Environmental Awareness】

JOCT has training for new employees to learn Environmental Awareness,e.g. anywhere you are at home or at the factory you have to keep clean by throwing rubbish properly into rubbish bin,turn off the light when you leave the room

【Social contribution】

Cleanning day activity : Employees have to cleannig around out side the factory e.g. road ,rain gutter



【Students training】

In every year, many students asking for apply to training, because before they go to graduation they they have to practice at the factory. So every year we have to training about 20 students around 2-6 months training course for them.

Emergency preparedness and response



【About Policy or training plan】

JOCT try to no use substance impact to environment (especially hazardous chemicals liquid) so we have established a comprehensive evacuation plan to safeguard our employees in case of emergency situation e.g."chemical leak". We was executed once



【Case of a training】

on left pic. show "chemical leak" emergency preparedness training