

Address	189 Moo 3 Tambol Nong Buasala Amphur Muang Nakorn Ratchasima 30000				
Lot area	6500m ²	Total floor area	3100m ²		
Establishment day	2008/4	Employees	2100persons		
ISO14001 certification	2001/1 *Plant acquired predecessor	ISO14001 renewed	2010/12		
Major Products	Optical pick up				
Environmental CommunicationFY2011					
Information disclosure	2items	visitors on factory tour	0persons	collaboration with municipality	1items
Contact	Environmental Sustainability Office		TEL:	045-450-2512	

Message from Compliance Administrator

JOCT has improved and expanded production area on demand of products for customers and we consider to environment, now we plan to reduce electricity energy in production lines. Our aim is to be number 1 environment consideration factory. So we stimulate employees to participation in reduction of energy, 5S as well as comply with law on occupational health, safety and environment.



Compliance Administrators
ANUCHIT SUKPLUM

Main activities in FY2011

Target	Result
Introduction of power consumption decrease equipment	We carry out the improvement of the spot lamp by energy-saving activity. I reduce a result, 0.17% of consumption electricity.
Waste reduction	We are 0.8% reduction by both sides use of the paper and the promotion of the E-mail.
Elimination hazardous chemical 0% by RoHS regulation	Control use raw materials(hazardous chemical)by RoHS regulation 100%

Products of Environmentally-conscious information



【CD OPTICAL PICKUP】
 This model for car audio CD OPTICAL PICKUP, to consist of the long life electric device, smaller ,lighter than other model.



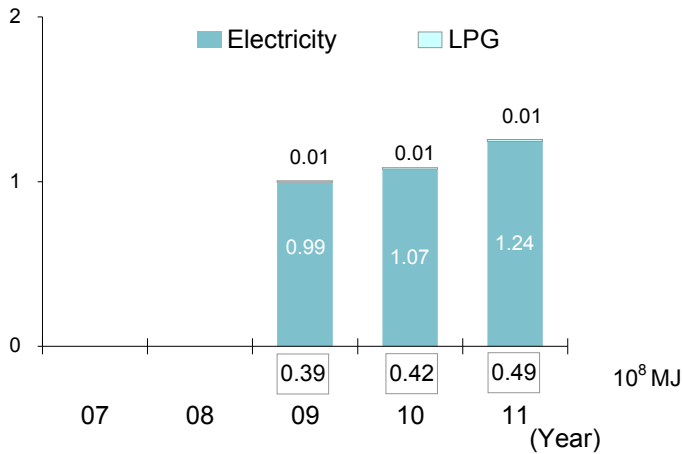
【DVD OPTICAL PICUP】
 This model for car audio DVD OPTICAL PICKUP, this new model is 7.6% lighter than other model .

Environmental performance data

Year displayed in graph ex) 2011: April 1, 2010 - March 31,2011

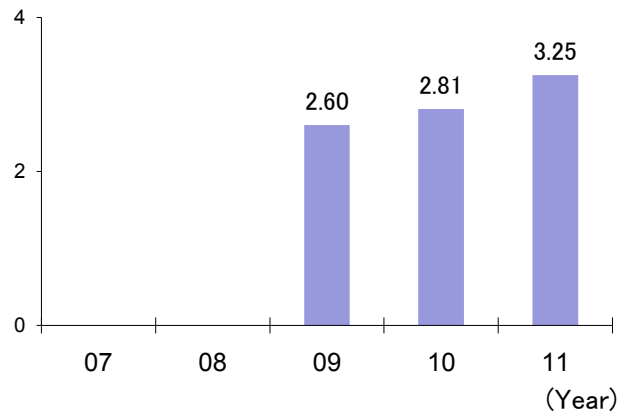
Energy

Unit: 1000kl



CO2 Emission

Unit: 1000t-CO2

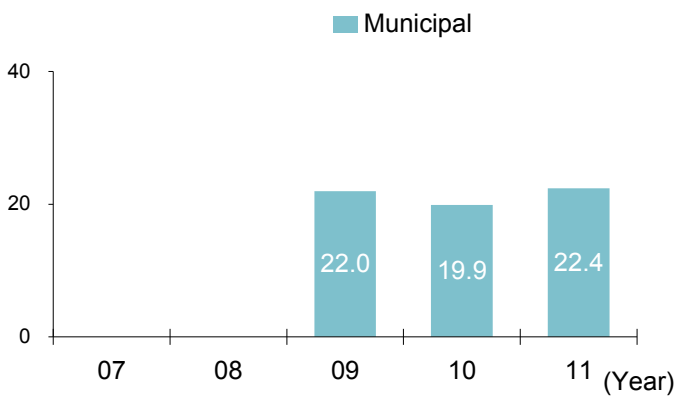


Calculation standards

Electricity CO2 Emission coefficient =0.687kg/kwh

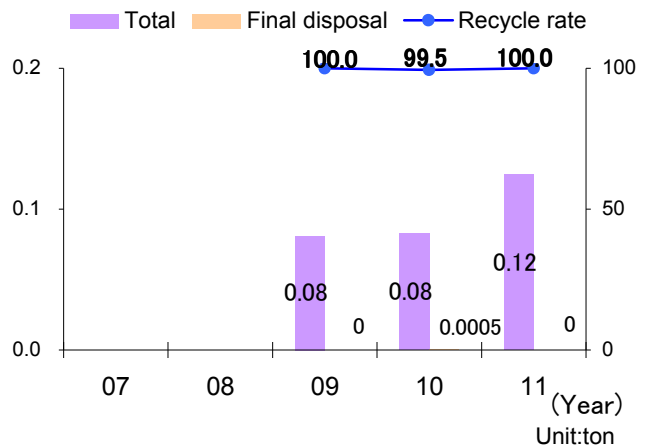
Water

Unit: 1000m³



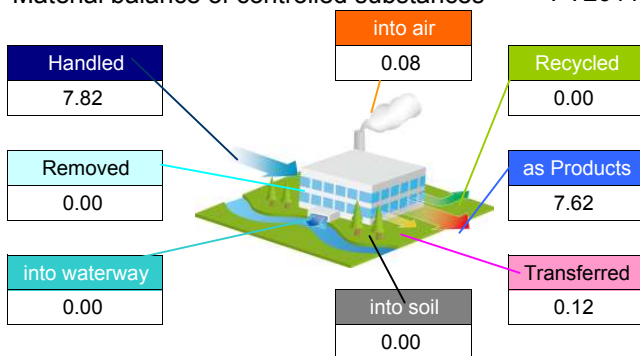
Waste

Unit: 1000ton, %



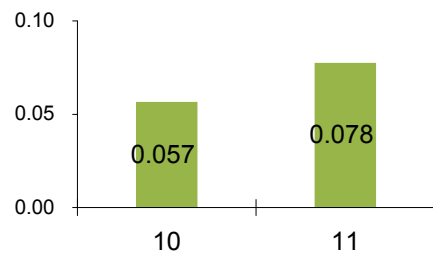
Chemical substances

Material balance of controlled substances FY2011



Key target reduction substances

[Released and Trasuferrrd amount]



About the above data

There are not the former data for the company which started on April 1, 2008.

Key target reduction substances : JVC selected about 60 substances from Japanese leagal, PRTR, VOC and GHG.

Compliance FY2011

<Air pollutant measurement results>

	Unit	Facility name	Legal limit	Voluntary limit	Average measured	Maximum measured	Measuring frequency
SOx	Nm ³ /h	N/A					
NOx	ppm	N/A					
Particulate	g/Nm ³	N/A					

<Water pollutant measurement results>

	Unit	Facility name	Legal limit	Voluntary limit	Average measured	Maximum measured	Measuring frequency
COD	mg/l	Effluent Factory	120.00		106.00		6 month
BOD	mg/l	Effluent Factory	20.00		14.00		6 month
Nitrogen	mg/l	Effluent Factory	100.00		61.08		6 month
Phosphorus	mg/l	N/A					

<Noise and vibration>

	Unit	Measurement Area	Legal limit	Voluntary limit	Average measured	Maximum measured	Measuring frequency
Noise	dB	DT In factory	90.00		73.90	77.30	6 month
		NT					
Vibration	dB	DT N/A					
		NT					

*Legal limit: The strictest value out of those specified by laws, ordinances or agreements.

*N/A(not applicable):The meaning when the facility is exempted from the regulation.

About excess of legal limit value

There is no item to report.

Improvement of direction by government, or point outs by neighbor

Occurrence situation	Countermeasure
There is no item to report.	

The company intend to comply with ISO 14001 EMS,

- 1) Prevent and reduce pollutions including continual improvement.
- 2) Comply with relevant environmental legislations and company's regulations.
- 3) Efficiently use of resources.
- 4) Inform policies to all employee.
- 5) Publicize company's implemented policies.

Aiming to reduction of environmental impact

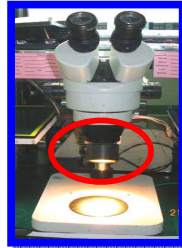
【Reduction of electricity energy】

We modify new spot lamp, after modify we can reduced energy used and we save cost to change or maintenance spot lamp.



Use detail (Before)

- ① Spot lame price = 11,000 Baht/1set
- ② Lamp price = 315 Baht/2month
- ③ Energy use = 252 Baht/month (90kW)



Use detail (After)

- ① Spot lame price = 4,000 Baht/1set
- ② Lamp price = 90 Baht/2month
- ③ Energy use = 34 Baht/month (12kW)

Environmental Communication



Education Service Center for the Blind.



Wat Ban Nongbuasala School

【Social activities】

JOCT emphasize of the education of youth and arrangement social activities. We granted scholarship, sports for 20 students to lacking school for create opportunities and potential of youth, to be a major force in developing countries.



【5S】

We intend to comply with relevant environmental legislations and company's regulations such as 5S. We inform policies to all employees and comply accordingly, they involved in cleaning up around the company. This is the first step to enhance competitiveness in the business world as well.